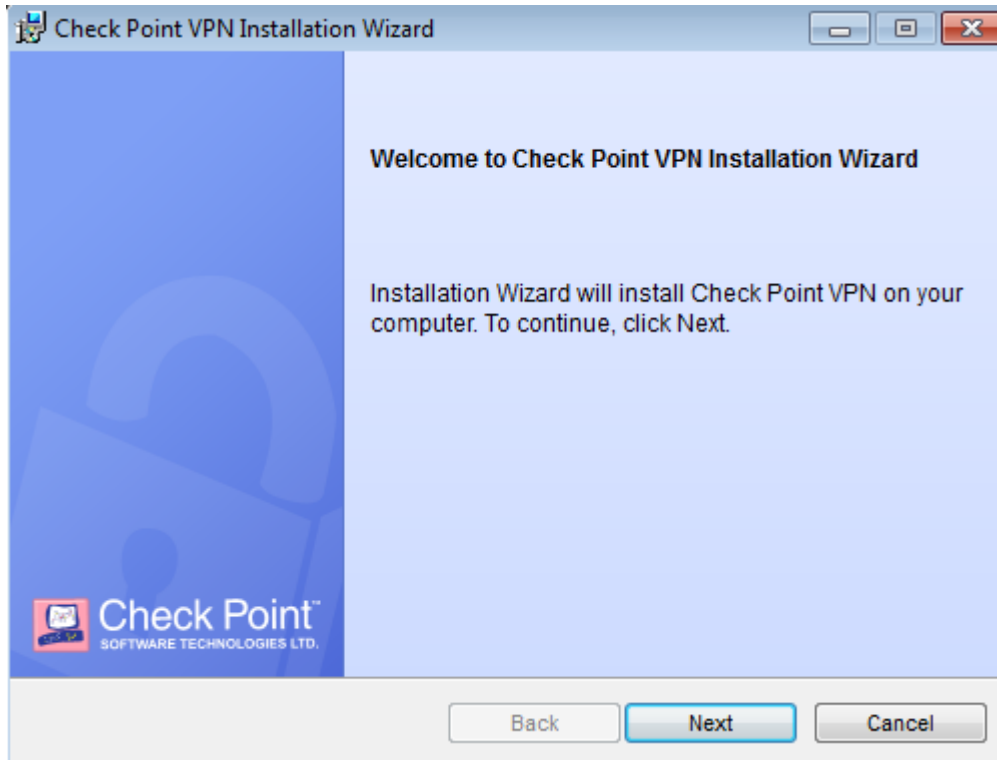


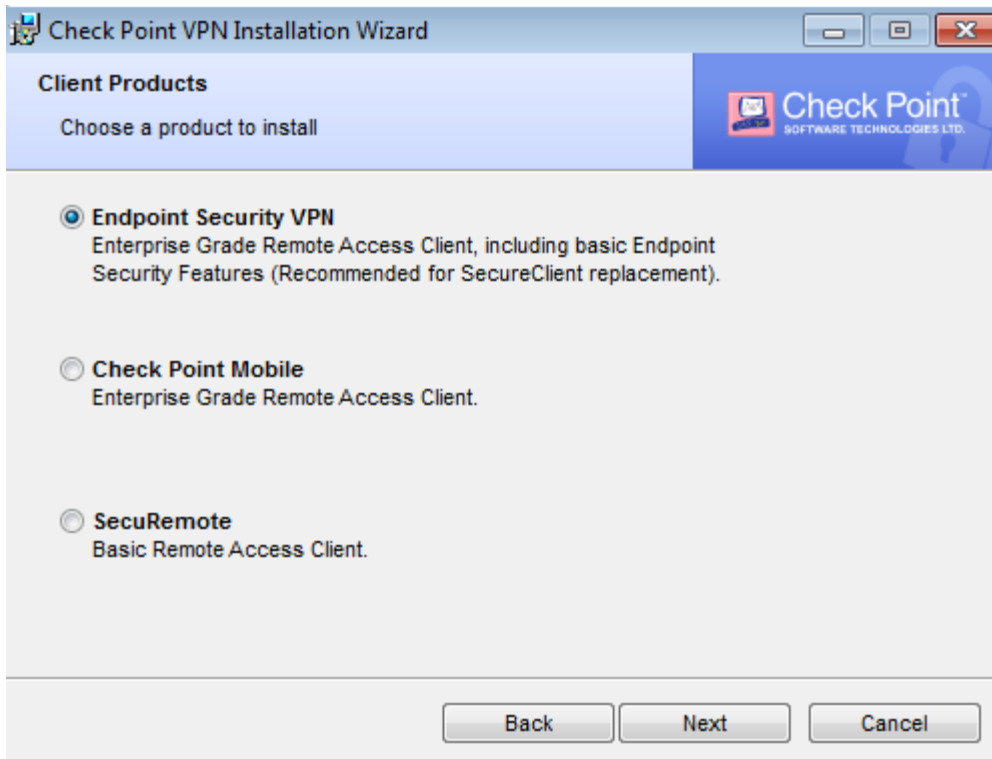
## Install Secure Remote:

1. Download 'Endpoint Security VPN R80.xx for Windows (click the hyperlink below as it will take you to the correct client).
  - a. For Windows XP, 7, & 8:  
[https://www.umcsn.com/Footer/Documents/CP\\_EPS\\_E80.51\\_RAC\\_Windows.msi](https://www.umcsn.com/Footer/Documents/CP_EPS_E80.51_RAC_Windows.msi)
  - b. For Windows 10:  
[https://supportcenter.checkpoint.com/supportcenter/portal/user/anon/page/default.psml/media-type/html?action=portlets.DCFileAction&eventSubmit\\_doGetdcdetails=&fileid=45891](https://supportcenter.checkpoint.com/supportcenter/portal/user/anon/page/default.psml/media-type/html?action=portlets.DCFileAction&eventSubmit_doGetdcdetails=&fileid=45891)

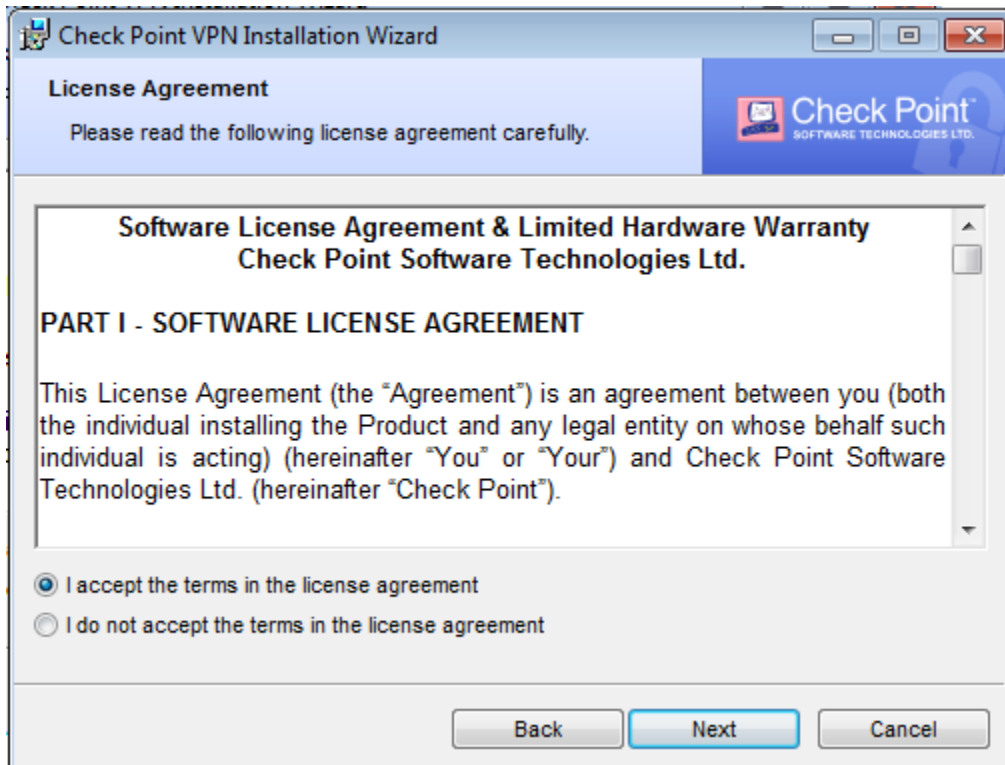
2. Start MSI



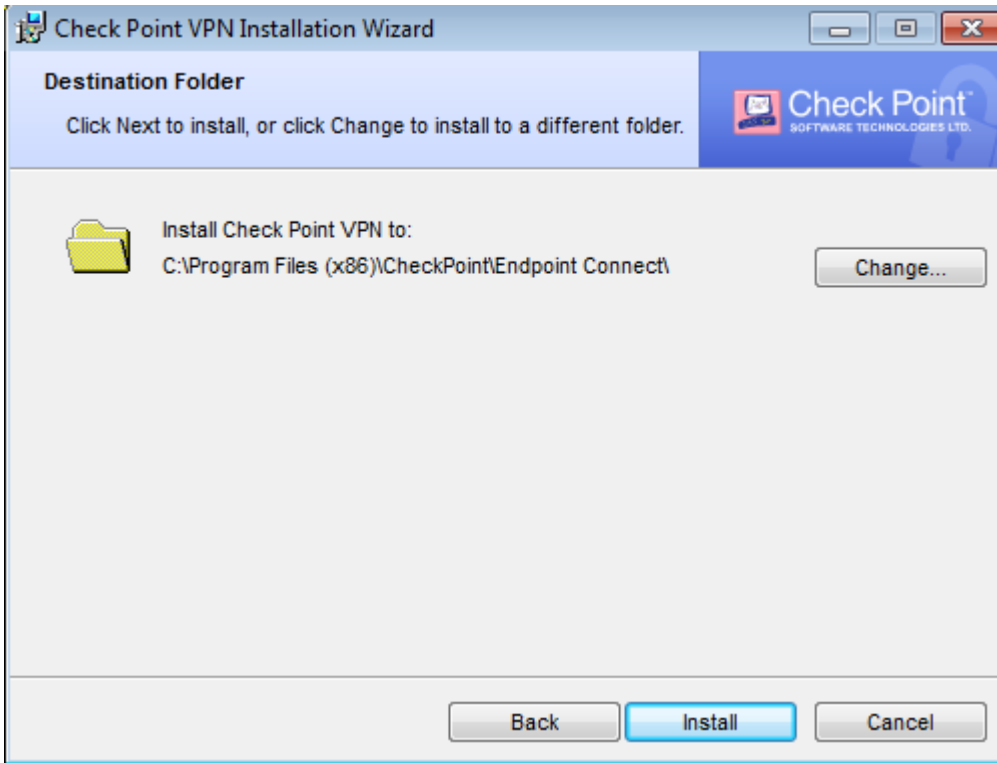
3. Click Next



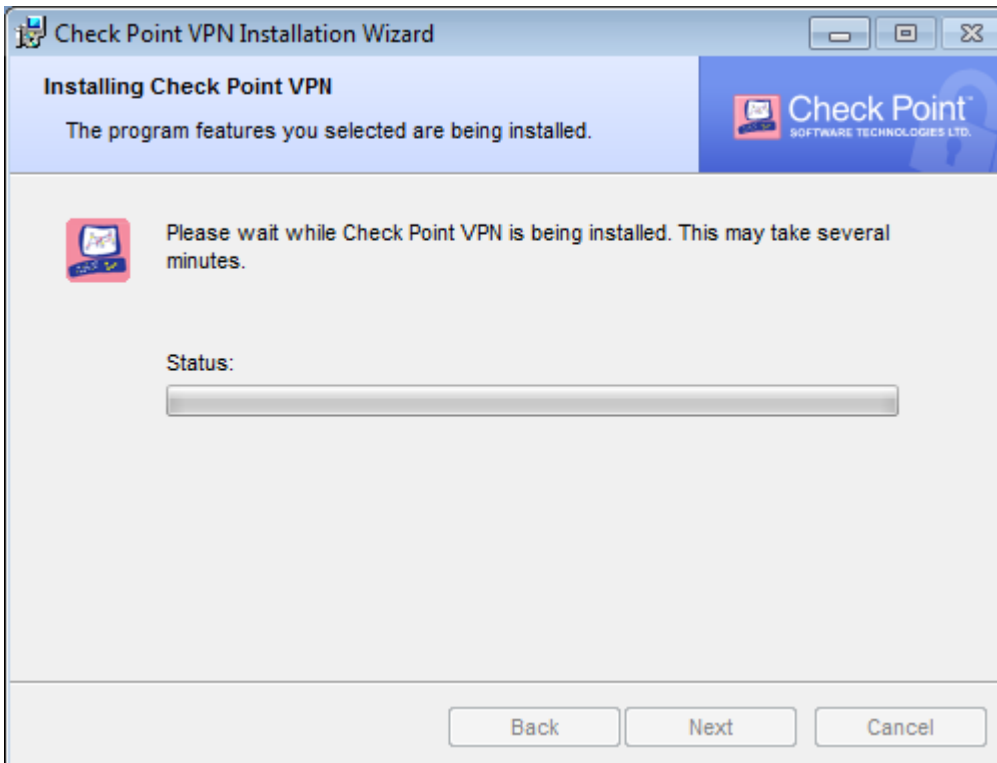
4. Select 'Endpoint Security VPN and click Next

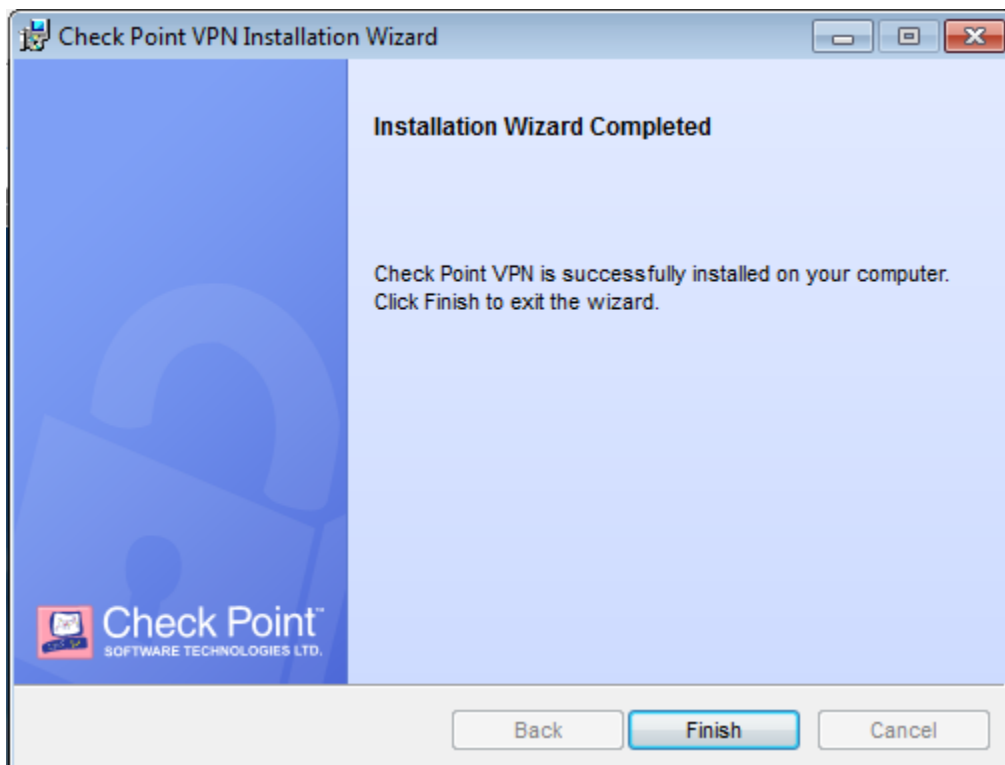
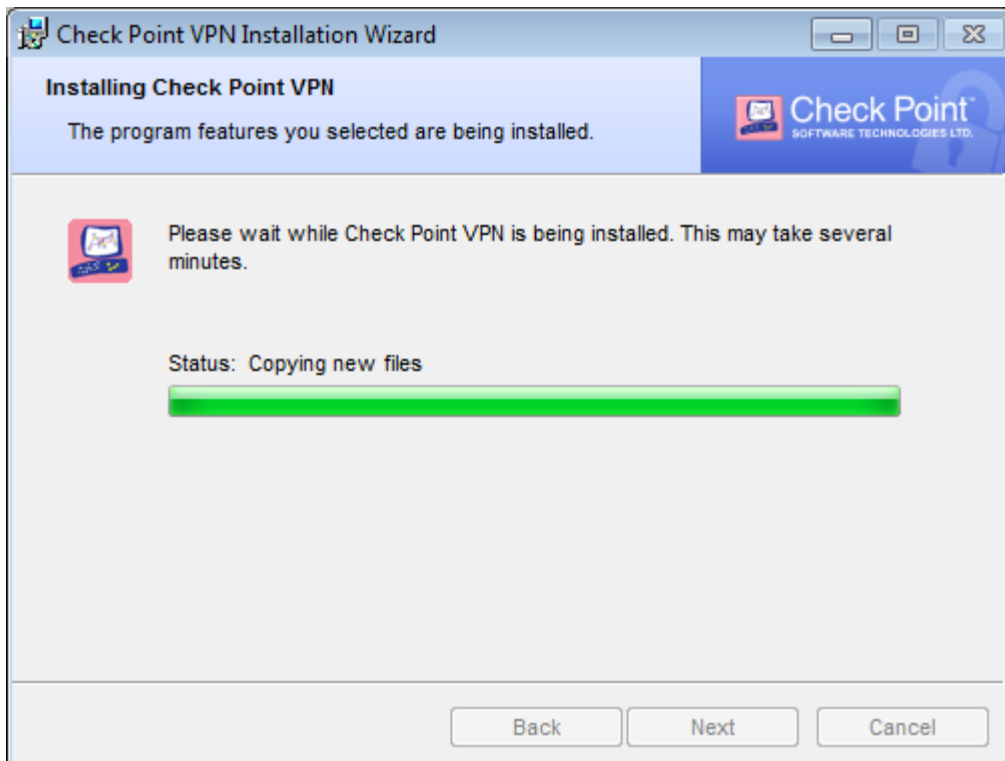


5. Select 'I accept the terms in the license agreement' & Click Next.




6. Click Install

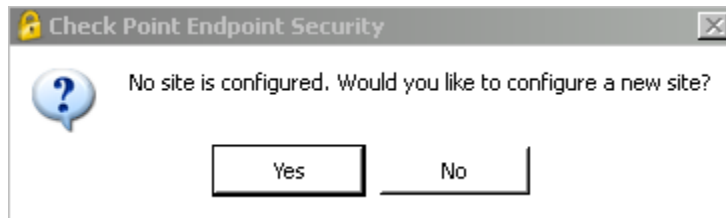




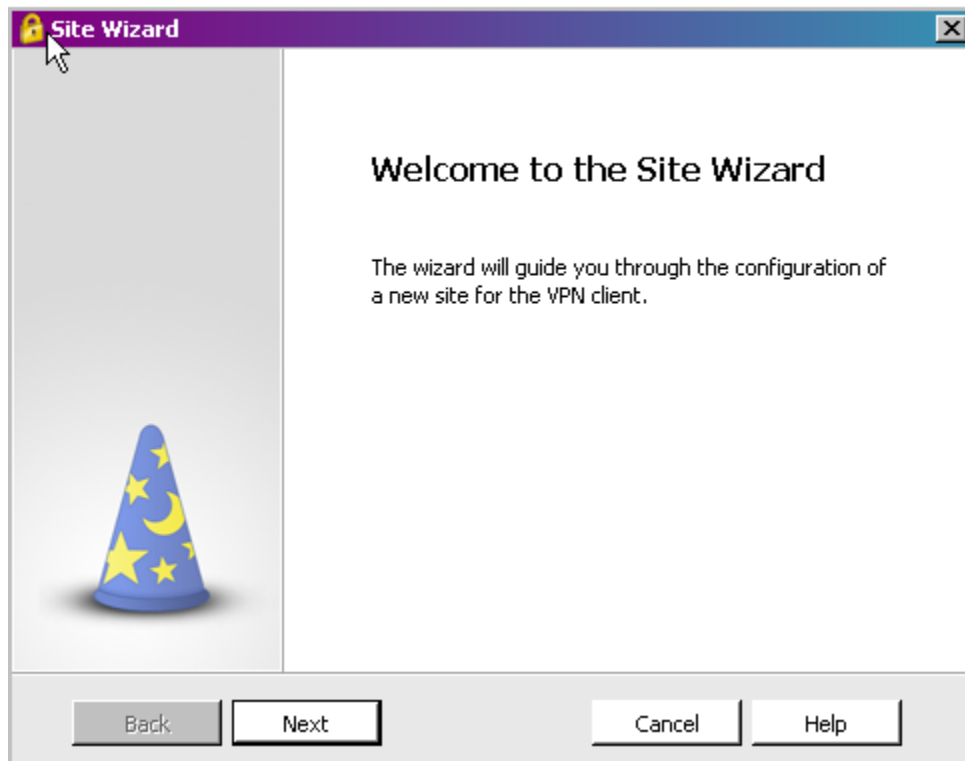
7. Click Finish.

## Configure Secure Remote:

1. Connect to the Internet
2. Start the Secure Remote software.
  - a. Click on <Start> Mouse to Programs> Mouse to Checkpoint> Click on CheckPoint Endpoint Security
  - b. You will see this small ICON by your clock . Double click the Icon and you will see the following:



- c. Click Yes



- d. Click Next

**Site Wizard**

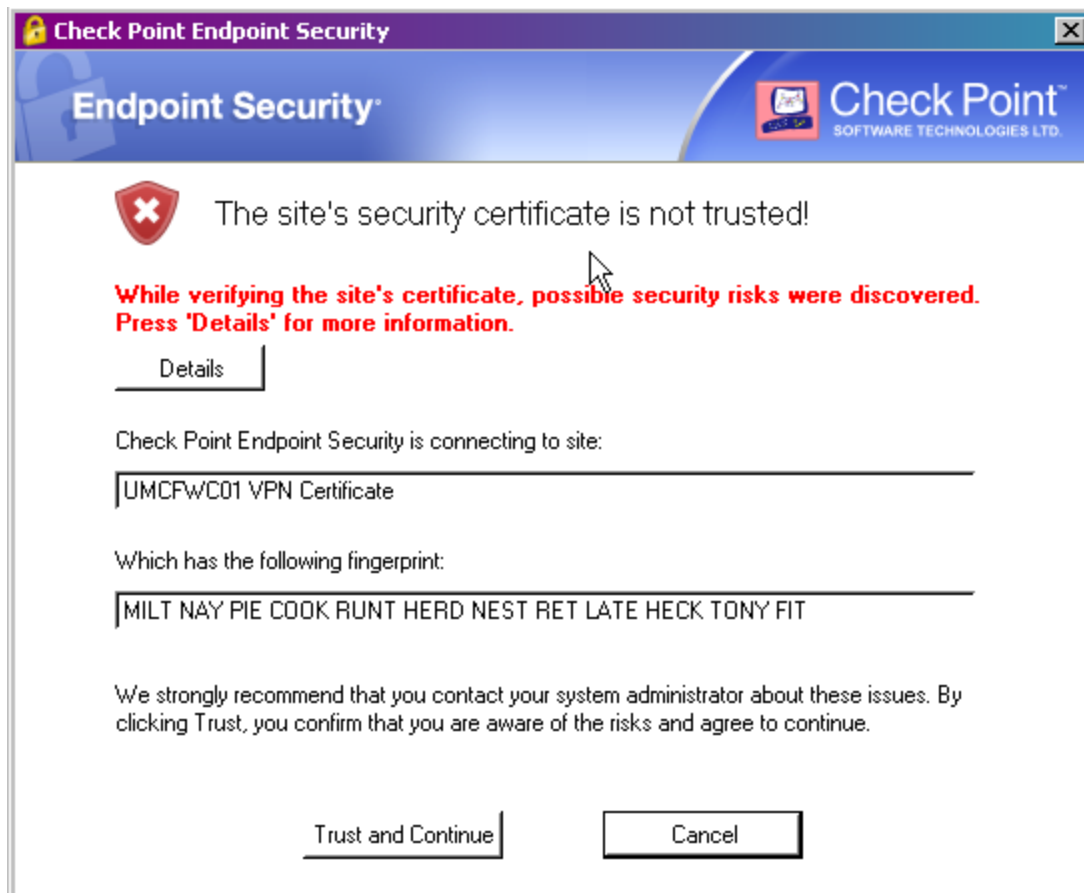
**Welcome to the Site Wizard**  
A site is your gateway to network resources.

To continue, fill in the required information and click next.

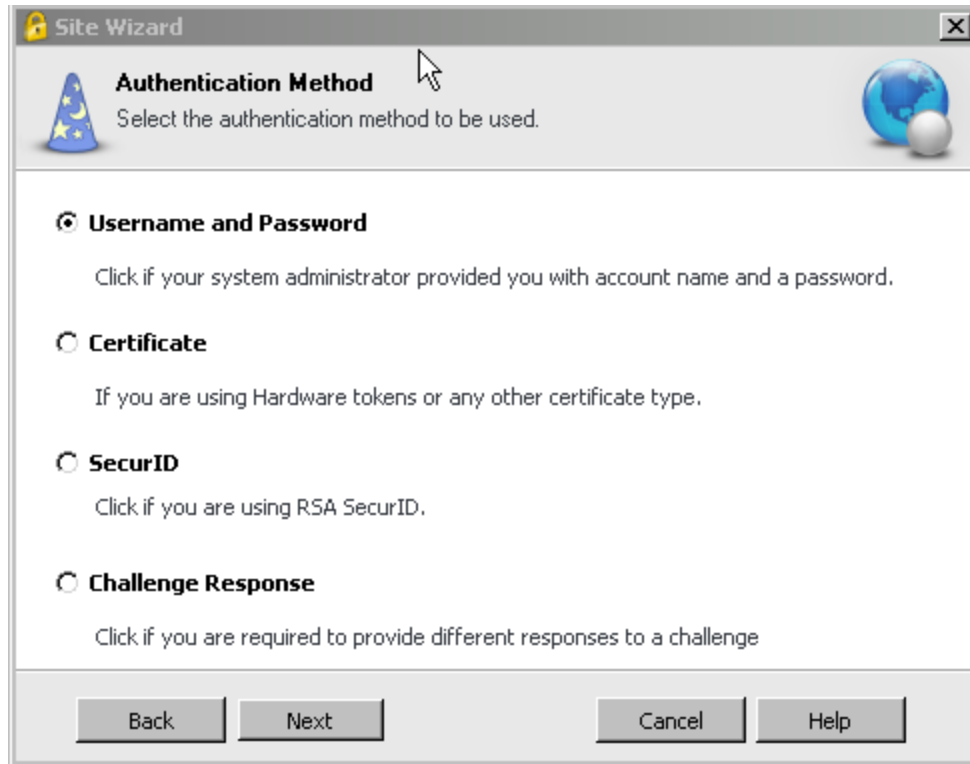
Server address or Name:

Display name:

- e. Fill out the Information as seen above
- f. Click **Next**

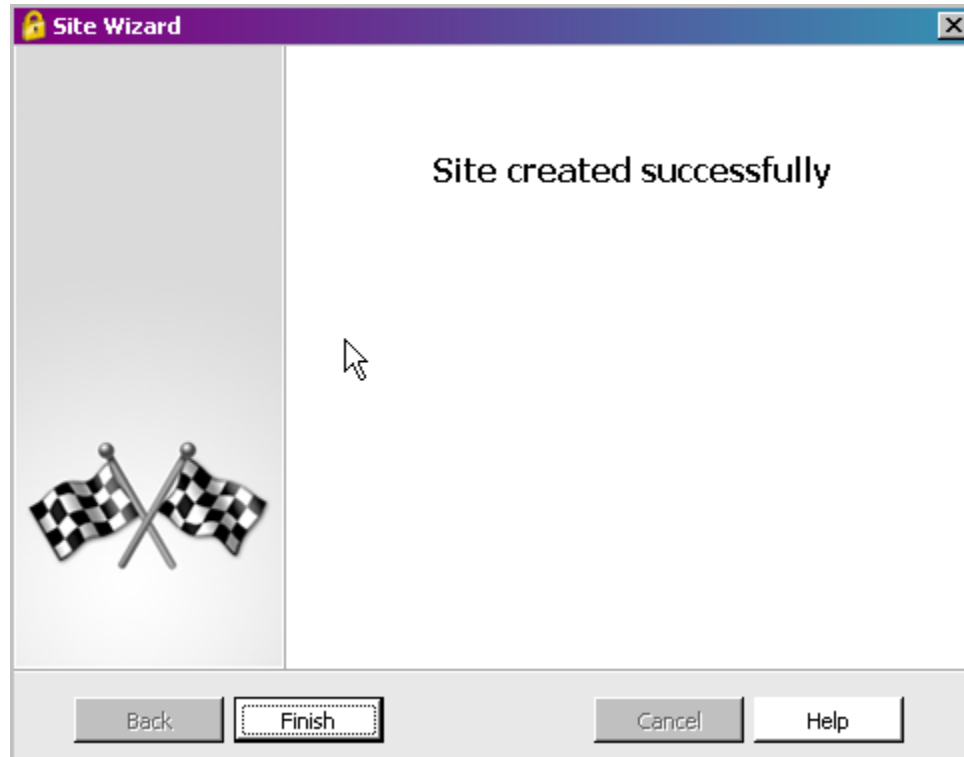


- g. Verify above states 'UMCFWC01 VPN Certificate'.
- h. Click Trust and Continue

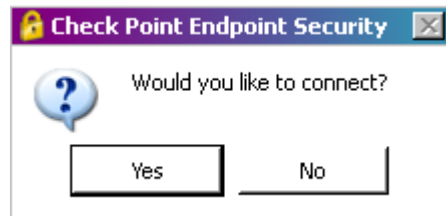


- i. Select User name and Password
- j. Click Next





k. Click Finish



l. Click Yes

3. You are now ready to test your connection.



- a. Double Check your username
- b. Provide your password
- c. Click Connect

(Please Note: All Usernames and Passwords are Case sensitive)

4. If you see a screen that says connection failed, please double check your user name and password.
  - a. Click OK

You are now connected to UMC; you can now start your secure data session.

\*Please note this set of instructions is provided with out support, and is to be install at your own risk. Other Software and hardware can prevent you from connecting to UMC, if you have an issue or problem connecting please contact the manufacture of your computer and its software for more information.

**\*Note: It is required that all connecting clients use a public IP address or NAT behind a public IP address. All connections to UMC must be made via system IP NOT system name.**